



TerraMi

2024

www.terrami.ca

TerraMi solutions for ESG

Sustainable Infrastructure



Infrastructure industry is one of the largest consumer of resources and raw materials, and it is also extremely wasteful



www.terrami.ca



Introduction to



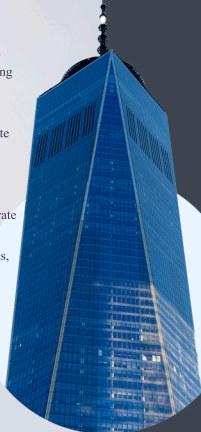
TerraMi Solutions Inc

TerraMi Solutions offers a software package focused on sustainability in urban development projects, emphasizing environmental, social, and governance (ESG) impacts.

Key areas include resource consumption reduction, waste and carbon emission management, and enhancement of social responsibility and economic growth.

Our solutions are based on circular economy and integrate with existing systems, promoting data-driven decision-making and collaboration among municipalities, contractors, financial institutions, and funding agencies.

www.terrami.ca



TerraMi solution for ESG

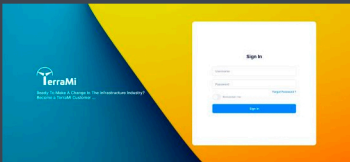
Comprehensive ESG Approach



ESG is a framework that helps stakeholders manage risks and opportunities related to environmental, social, and governance concerns.

TerraMi brings a comprehensive view that goes beyond traditional environmental issues, addressing carbon reduction, climate change, waste minimization, nature regeneration and economic productivity.

Stakeholders such as investors, customers, suppliers, and employees benefit from insights into organizational sustainability.



TerraMi Team Overview



Saeed Motasaddi Zarandi – CEO

Full professor, Expert in environmental science, ESG, and circular economy.



Mansour Afshar
CTO

Veteran in IT, project and quality management.



Mehdi Mafakhery
COO

Experienced in managing massive infrastructure projects.



Shahram Bahrami
Customer Success Manager

Expertise in civil law and defending municipalities.

Highlight of proprietary data and algorithms developed by the team.

Proprietary Innovations

TerraMi offers unique intellectual property, including



Historical data and use cases to drive solutions

Intuitive user interface for data collection

Advanced ESG data management software

Deep expertise in infrastructure, and management

Ideal solutions based on circular economy and ESG risks

Our proprietary data and algorithms are key trade secrets developed through extensive research.

www.terrami.ca

Partnership Benefits



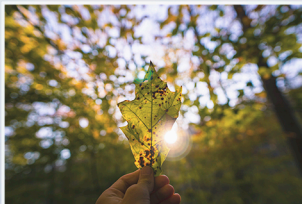
Collaborating with TerraMi provides access to innovative solutions and industry expertise.

We empower partners to implement circular economy strategies while minimizing ESG risks.

Our focus is on nature regeneration, economic growth and sustainable project development.

Join Us Now

E S G T e r r a m i s o l u t a i o n



TerraMi

www.terrami.ca

